

bridgeview



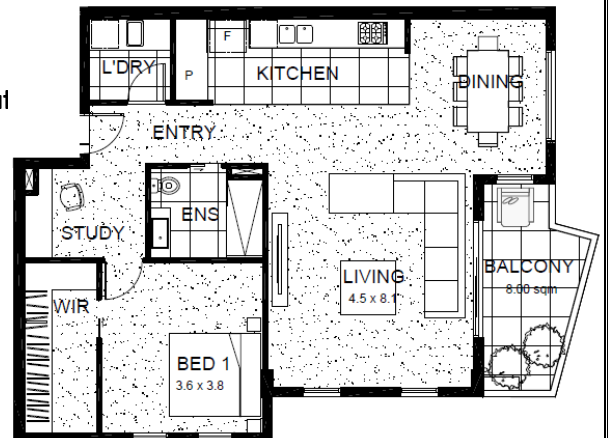
Apartment 13 1 Bedroom + Study (Level 2)

\$299,000

Imagine life in this well appointed apartment with your own private balcony capturing the morning sun. Everything you could want is at your front door and, with a beach right across the road, it provides the perfect coastal base.

- Fully appointed kitchen overlooking living and dining areas
- Spacious bedroom with walk in robe
- Ensuite bathroom and separate internal laundry
- Study nook

Close to restaurants, shops and services, and all that Phillip Island has to offer just a short drive away, this residence is the perfect location for a coastal escape unlike any other. Only 90 minutes from Melbourne CBD, Bridgeview offers an unrivalled lifestyle opportunity for the astute purchaser.



DIMENSIONS

Floor Area 93.7 m²
Balcony Area 8.0 m²
Total Area 101.7 m²



To discover more about Bridgeview contact the developer, TS Constructions on 5672 2466 or 0419 311 461

Photos are for illustrative purposes only and contain furniture and other items for display that are not included in the sale of the property. Please check for details of all inclusions.