

bridge
view



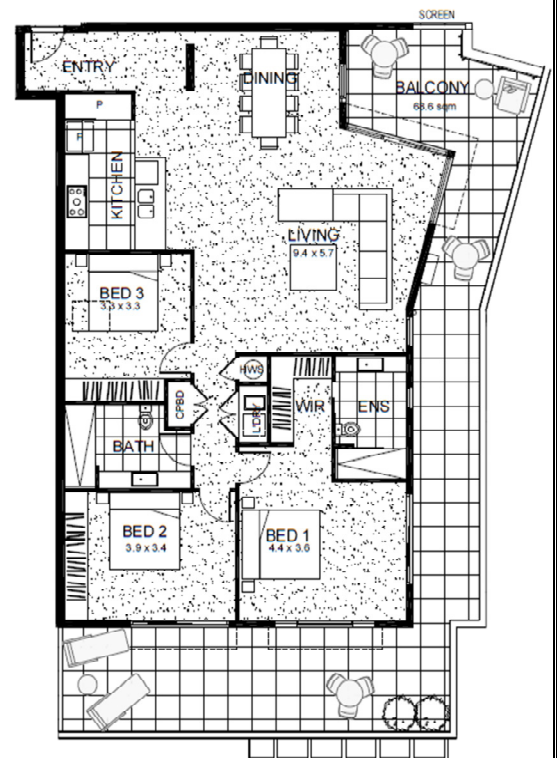
Apartment 18 3 Bedrooms Penthouse (Level 3)

\$599,000

Perfectly positioned to capture the morning sun, this secluded top floor apartment has views over the hinterland through to Bass Strait.

- Master Bedroom with walk in robe & ensuite
- Two additional bedrooms with built in robes & central bathroom
- Gourmet kitchen with stone bench tops & stainless steel appliances
- Huge, wrap around balcony
- Secure entry with intercom/access system
- Climate controlled air conditioning to all bedrooms and living areas
- Two secure, undercover car parks on title

Close to restaurants, shops and services, and all that Phillip Island has to offer just a short drive away, this residence is the perfect location for a coastal escape unlike any other. Only 90 minutes from Melbourne CBD, Bridgeview offers an unrivalled lifestyle opportunity for the astute purchaser.

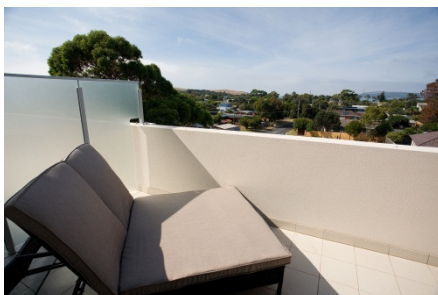


APARTMENT DIMENSIONS

Floor Area 146.0 m²

Balcony Area 68.6 m²

Total Area 214.6 m²



To discover more about Bridgeview contact the developer, TS Constructions on 5672 2466 or 0419 311 461

Photos are for illustrative purposes only and contain furniture and other items for display that are not included in the sale of the property. Please check for details of all inclusions.